

Optional Auto Louvre Installation

Once the louvre is installed in the greenhouse you can replace the manual handle with the automatic unit.

First of all remove the screw to release the arm (diagram 57).

Next Remove the handle from the frame of the louvre (diagram 58).

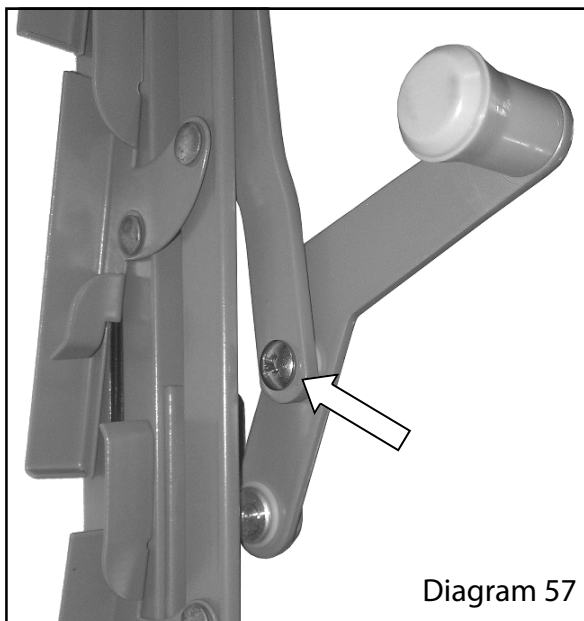


Diagram 57

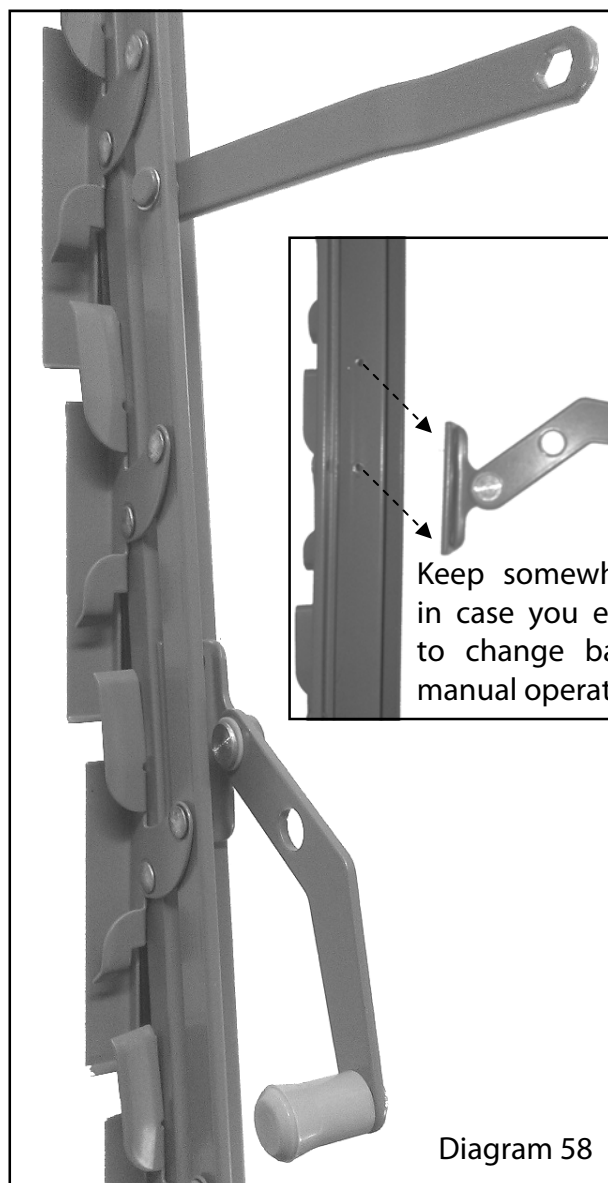
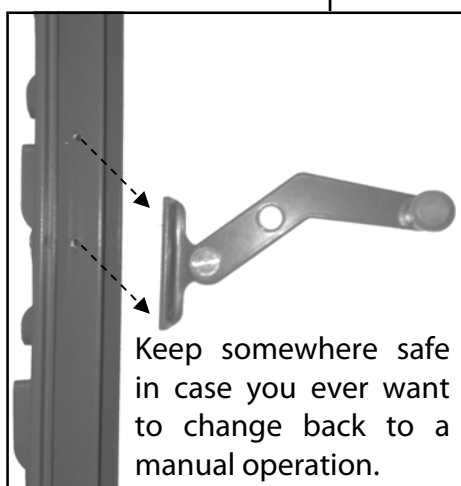


Diagram 58



Keep somewhere safe in case you ever want to change back to a manual operation.

Diagram 59 shows the parts you need to attach the auto opener.

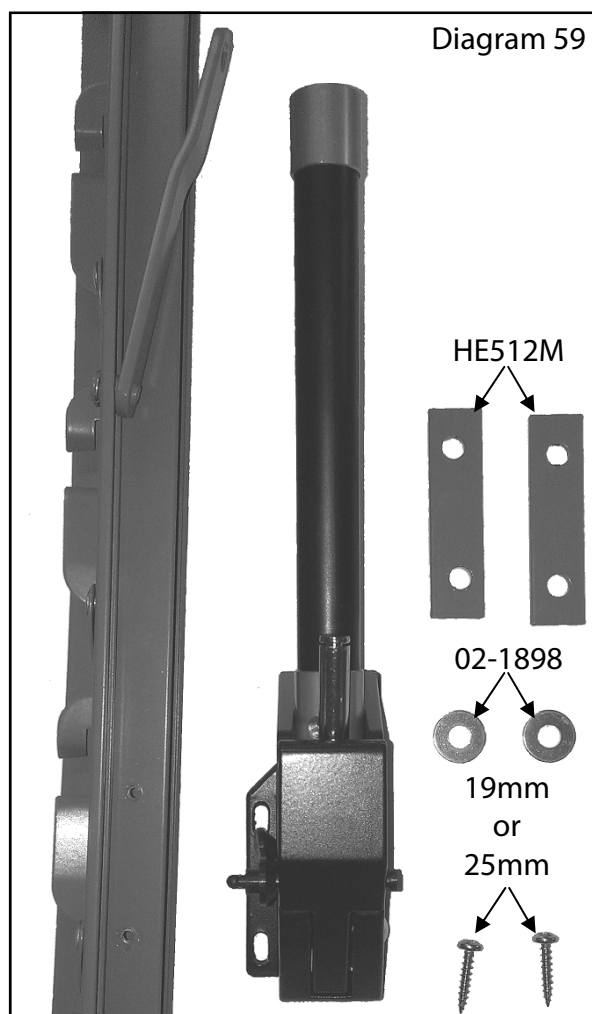


Diagram 59

Optional Auto Louvre Installation

You now need to mark the frame to drill the 2 holes, use a 2.5mm drill bit for this.

Offer the opener up to the frame with the plates and washers and slide the louvre arm into position. This now gives you the correct location for the opener (diagram 60). Once you have marked the frame remove the opener to drill the holes.

Now fix the opener to the frame using the 2 plates and 2 washers (diagram 61). You should have either 19mm or 25mm screws spare from the greenhouse frame for this.

Once fixed in place attached the louvre arm to the opener and hold in place with the plastic pop-on cap (diagram 62).

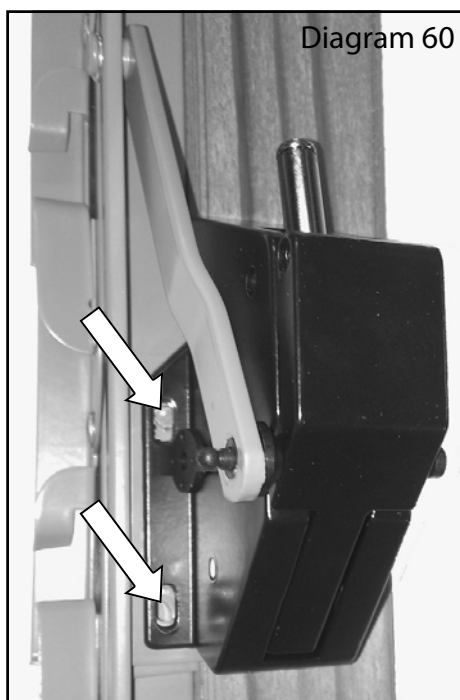


Diagram 60

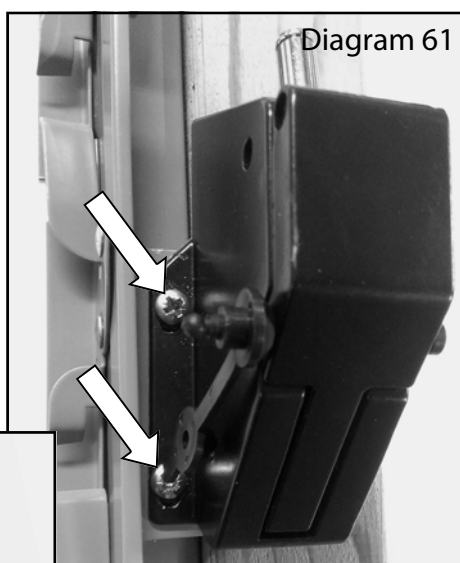


Diagram 61

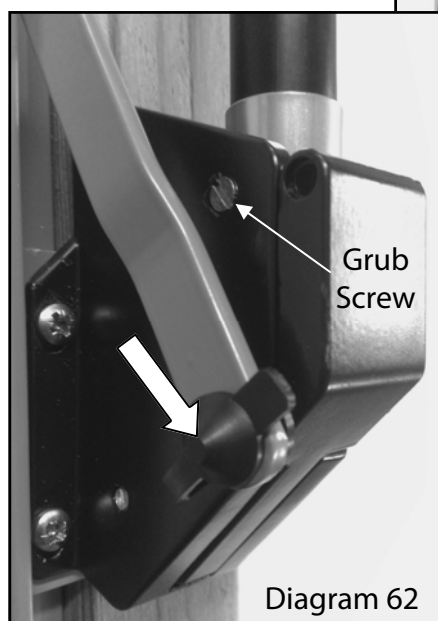


Diagram 62

Now slide the cylinder onto the shaft attached to the body of the opener, secure this in place with 2 grub screws (diagram 62). Finally fit the thumb screw to the end of the cylinder, adjust this to get the desired amount of ventilation (diagram 63).

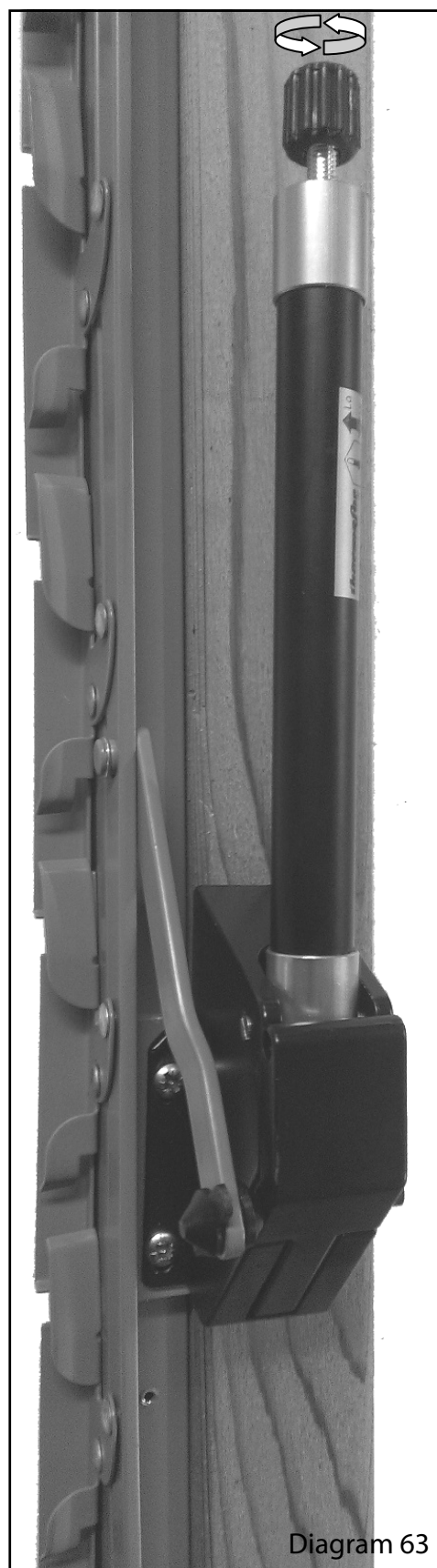


Diagram 63